

BUCKET ELEVATORS

Up to 13,000 BPH



SPECIFICATIONS

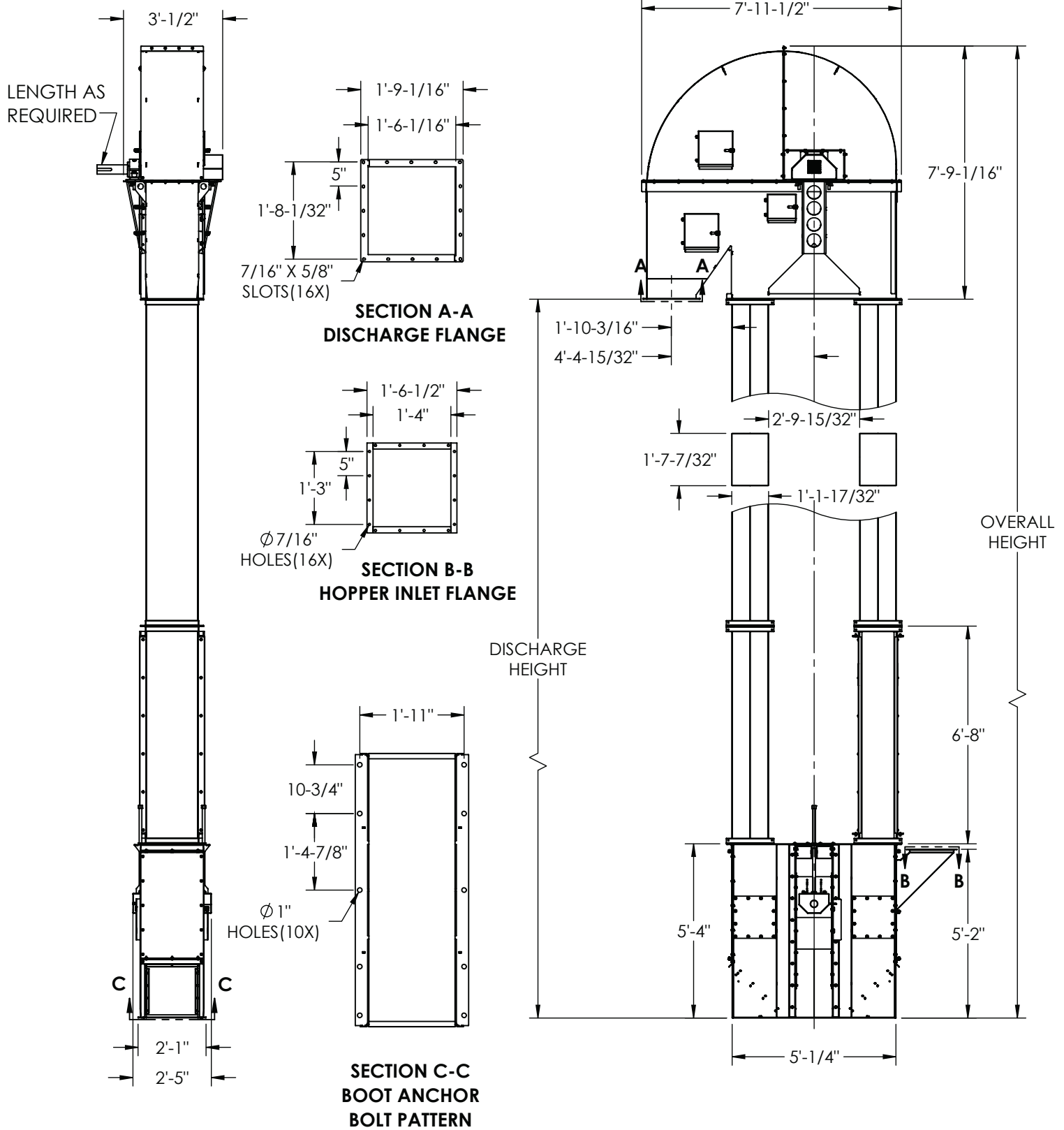
Model	UniMAX™ 36
Capacity - Free Flowing Material @ 110% Waterline Bucket Fill	9,500 - 13,000 BPH 11,800 - 16,200 CFH
Short TPH @ 50 lbs/ft³	290 - 395 TPH
Belt Speed	574 - 800 FPM
Headshaft RPM	61 - 85 RPM
Bucket Spacing	10"
Head Casing	12 Ga. Hoods & 10 Ga. Lower Head
Head Shaft Bearing	Pillow Block Type E-Xtra Bearings Optional Pillow Block Type EXL Bearings
Head Pulley	36" Dia. Pulley with Slide Lagging
Buckets	14x8 HDPE Buckets
Belting	17" Wide Rubber Conti-Tech Pathfinder®
Legging	12 Ga. Optional 10 Ga.
Boot Casing	1/4"
Boot Shaft	2-7/16" Dia.
Boot Shaft Bearing	Pillow Block SC Ball Bearing Optional 4 Bolt Flange SC Ball Bearing
Boot Pulley	36" Dia. Self-Cleaning Wing Pulley
Steel Construction	Carbon, Hot Dipped Galvanized, or Stainless
Drive Package	Optional
Motor	Optional
Lining Options	AR Steel, Ceramic, and Urethane
Optional Accessories	Shovel Pocket, Rack & Pinion Cleanout Slides, Cup Fill Inspection Door, Pressure Relief Panels



**THE TRADITION OF
EXCELLENCE CONTINUES!**

www.universalindustries.com

UniMAX™ 36



*SPECIFICATIONS AND DESIGNS ARE SUBJECT TO CHANGE WITHOUT NOTICE

NOTE: Unit application, location and specifications determine the type, quantity and/or placement of electrical, electrical safety or other safety controls required. Whether these controls are supplied by Universal Industries or another supplier, all OSHA safety and health standards, the National Electrical Code and local codes must be met and followed. Because we constantly strive to provide the finest material handling equipment, establishing industry standards, specifications must remain subject to change without notice.



Universal Industries

5800 Nordic Drive • PO Box 308 • Cedar Falls, IA 50613

1-800-553-4446 • 319-277-7501 • Fax: 319-277-2318

www.universalindustries.com • sales@universalindustries.com

Printed in the U.S.A. Copyright 2016