



**Universal[®]
Industries**
Universal Industries, Inc.

Cleated Trough Conveyor

UniVey™ Conveyors



SPECIFICATIONS

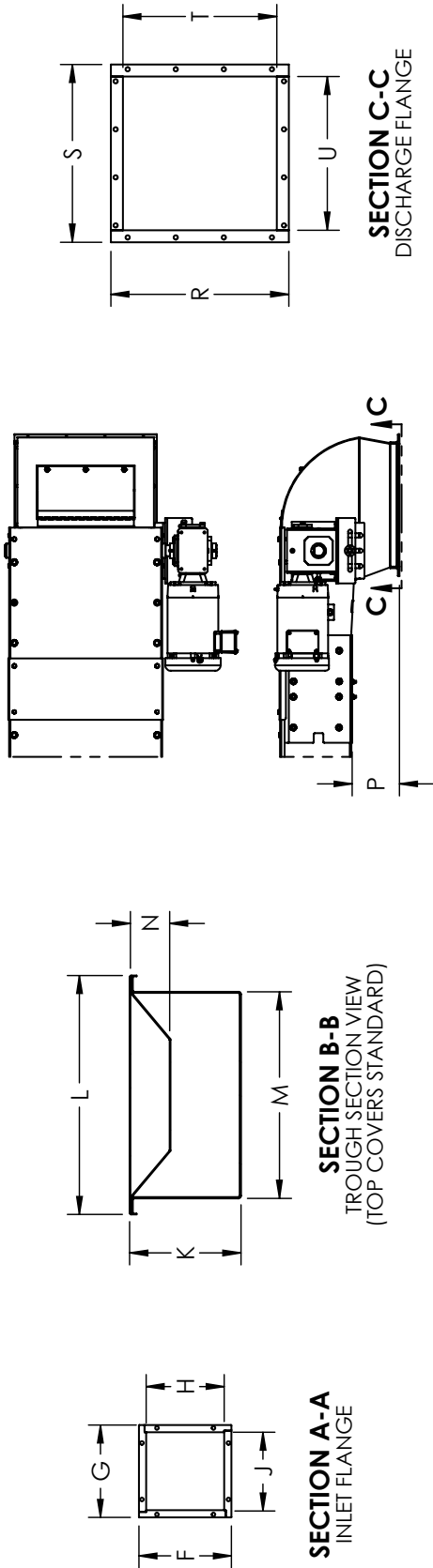
Model	CTC 16	CTC 20	CTC 24
Belt Width	16"	20"	24"
Belt Speeds	50 - 275 FPM		
Bearings	Sealed Industrial Ball Bearings		
Head Pulley	4-1/2" Dia. Crowned Drum with Vulcanized Rubber Lagging		
Headshaft	1-7/16" Dia.		
Tail Pulley	4" Dia. Crowned Drum		
Belt Take-up	9"		
Length (Minimum)	10'		
Length (Maximum)	Consult Factory		
Depth of Conveyor	9-1/4"		
Depth of Trough	3-1/4"		
Frame Construction	12 Ga. Formed		
Drive (Optional)	Shaft Mounted Reducer		



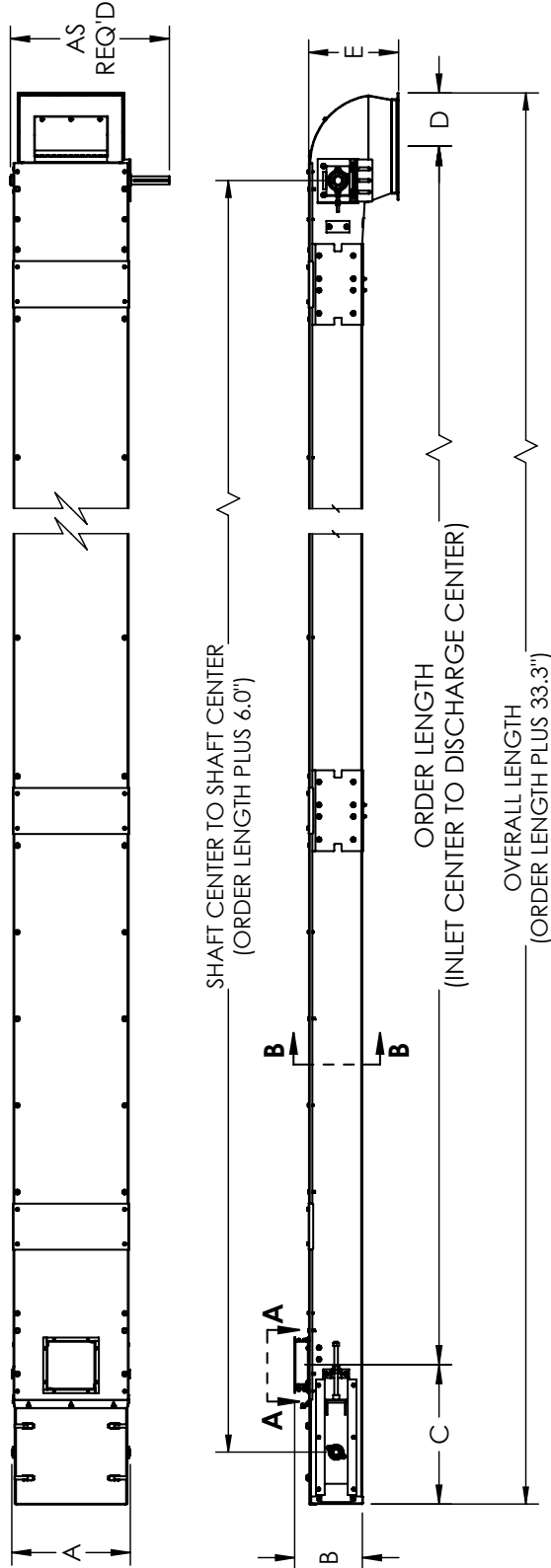
**THE TRADITION OF
EXCELLENCE CONTINUES!**

www.universalindustries.com

Cleated Trough Conveyor



OPTIONAL #4 DRIVE
(DRIVE DIMENSIONS VARY WITH REQ'D HP)



MODEL	DIM	A	B	C	D	E	F	G	H	J	K	L	M	N	P	R	S	T	U
CTC16	in	20.5	11.8	24.0	9.3	15.6	9.6	9.6	8.1	8.1	9.3	19.9	17.1	3.3	6.1	18.5	18.5	16.0	16.0
	mm	521	298	610	235	397	244	244	206	206	235	506	435	83	156	470	470	406	406
CTC20	in	24.5	11.8	24.0	9.3	15.6	12.6	12.6	10.1	10.1	9.3	23.9	21.1	3.3	6.1	18.5	18.5	16.0	16.0
	mm	622	298	610	235	397	320	321	257	257	235	607	537	83	156	470	470	406	406
CTC24	in	28.5	11.8	24.0	9.3	15.6	12.6	12.6	10.1	10.1	9.3	27.9	25.1	3.3	6.1	18.5	18.5	16.0	16.0
	mm	724	298	610	235	397	320	321	257	257	235	709	638	83	156	470	470	406	406

* OPTIONAL BEARING GUARDS NOT SHOWN

* SPECIFICATIONS AND DESIGNS ARE SUBJECT TO CHANGE WITHOUT NOTICE

NOTE: Unit application, location and specifications determine the type, quantity and/or placement of electrical, electrical safety or other safety controls required. Whether these controls are supplied by Universal Industries or another supplier, all OSHA safety and health standards, the National Electrical Code and local codes must be met and followed. Because we constantly strive to provide the finest material handling equipment, establishing industry standards, specifications must remain subject to change without notice.