



Commercial Bins



Prefer a digital version?
Scan the QR code with
the camera on your
smartphone to view or
download this brochure



World's Largest Free Span Bins

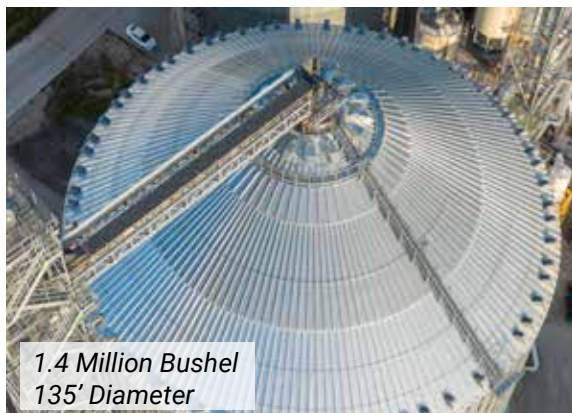
- Up to 2.25 Million Bushel
- Up to 165' Diameter

Million Bushel Bins



2.25 Million Bushel
165' Diameter

More grain means more bushels, and that means bigger bins. We've answered the call for more storage with our 135', 156', and 165' Commercial Bins. The 135' was the first ever fully-erected free-span bin to hold more than one million bushels followed by the 156' several years later. The 165' is currently the largest free span bin in the world. With 1.4, 2, and 2.25 million bushel capacities respectively, you can maximize your storage space, while minimizing the number of bins.



1.4 Million Bushel
135' Diameter

Sukup million bushel bins also feature a 16' or 21' flat deck around the peak of the bin. This provides more area to attach catwalks and conveyors as well as more room to work, making it safer to service.



90'-135': 16' Flat Deck
156'-165': 21' Flat Deck

Flat top peak decks standard on 50K, 100K, or 150K roof, 36' and larger.

Image shown with optional conveyor support

COMMERCIAL BINS

SAFETY FIRST - SUKUP SAFETY FEATURES



Sukup Commercial Bins come with a number of safety features including a standard Restraint Anchor (rated for 1,800 lbs.) mounted near the manhole for use with a lifeline and safety harness. An additional Peak Anchor with rafter bracket and a knot passing pulley is provided on roofs rated on 15,000 lbs. or greater. In addition to these features, there are extensive safety sections at the Sukup website to help owners understand the hazards of grain storage, and replacement shields and decals are available at no charge.




HIGH STRENGTH STEEL - SUKUP SIDEWALL SHEETS


Sukup uses a minimum 70,000 to 75,000 PSI tensile strength steel to provide better hoop tension load carrying capacity. The 4" wide corrugations on Sukup sidewall sheets create less resistance and friction to allow grain to flow more easily. Sukup sheets are 44" high, so there are fewer rings, seams and bolts than bins with 32" sidewall sheets.



TOP QUALITY BOLTS

Bolts on Sukup Commercial Bins are SAE Grade 8.0 Hardware with JS1000® plating. The SAE Grade 8.0 Hardware ensures that Sukup bolts will hold up to the stresses placed on them.

	PROOF LOAD	YIELD STRENGTH	TENSILE STRENGTH
Bolt Grade	(PSI)	(PSI)	(PSI)
8 	120,000	130,000	150,000
5	85,000	92,000	120,000
2	55,000	57,000	74,000

Corrosion Protection	Hours to Red Rust
 1000 Hour	1000
Polyseal	240
Zinc Dichromate	108
Zinc	72

The 1000 Hour plating gives longer life for Sukup Commercial Bins.

DOUBLE-ENDED STUD BOLTS



Double ended stud bolts eliminate water infiltration between laminated sheets and grain at stiffener location.

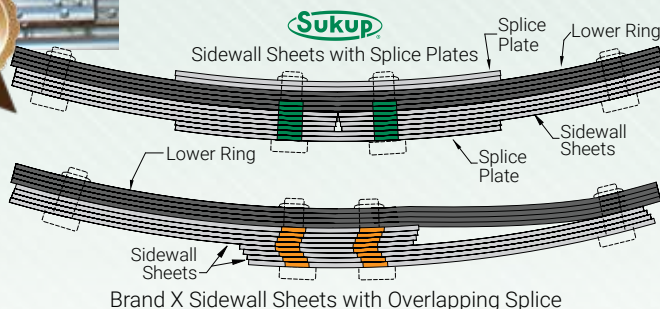


Better By Design™

LAMINATED SPLICE PLATE

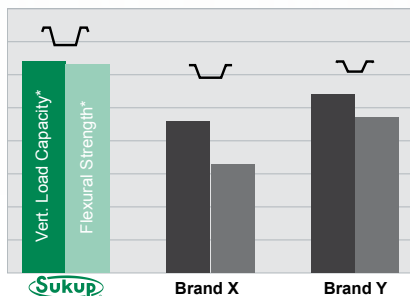


On larger commercial bins, Sukup patented laminated splice plates reduce the risk of bolt shear. Instead of overlapping the edges of laminated sidewall sheets, we use a butt joint and specially designed splice plates. The design makes the bin easier to erect because the holes are properly aligned and eliminates gaps that can lead to leaking.



COMMERCIAL STIFFENERS - SUKUP VS. THE COMPETITION

Not all stiffeners are designed alike, and not all stiffeners perform alike. Sukup commercial stiffeners are made from 70,000 PSI minimum tensile strength galvanized steel and were computer-engineered specifically to make them extra strong.

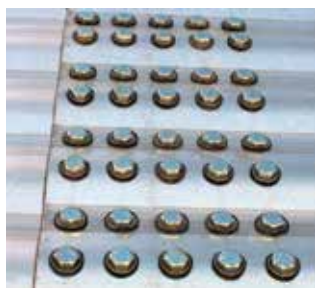


* Effective load carrying capacities and flexural strength of the stiffeners were calculated based on American Iron and Steel Institute (AISI) Cold-Formed Steel Standards with 8 gauge. ASTM A653 Grade 50 Steel.



Sukup stiffeners are externally-mounted only. External stiffeners provide excellent support and prevent the accumulation of grain and the resulting spoilage that can occur with internal stiffeners. Wind rings are used to provide greater rigidity to Sukup Commercial Bins when they are empty.

OPTIMUM BOLT USAGE



The vertical bolt pattern on Sukup Commercial Bins has been evaluated for optimum performance and convenient erection. Sukup engineers use solid imaging computer design analysis to determine the proper bolt size to ensure the integrity of the seams while minimizing the number of bolts needed in order to speed erection and keep costs in line.

EASY ACCESS

Single Ring Door

A 44" single-ring door is available on shorter Sukup Commercial Bins. It features patented Hammer Head™ latches and the inner panels lay flat against the sidewall when open.



Commercial 1-Ring Door

26" X 28" door is standard on larger/taller Sukup Commercial Bins.



Walk-Through Door

A 60" walk-through door is also available as a convenient option to help enter and exit with ease.



Skid Steer Door

An optional patented 8' Skid Steer door is also available for even greater access.



SIDE DRAW SYSTEM



Sukup side draw systems are an option on Commercial Bins. (As with any side draw, the grain must be emptied to a uniform height on the sidewall before refilling. Use only Sukup designed side draw units with Sukup Commercial Bins. Never add a side draw system to an existing bin.) Discharge capacity approximately 9,000 BPH based on #2 yellow corn.

BUILT TO BE THE BEST from

PEAK LOAD RATING



Sukup offers commercial roofs with 15,000, 30,000, 50,000, 100,000, or 150,000 lb. peak load ratings. Roof ratings are pounds evenly distributed on peak ring as pure vertical peak load with 105 mph wind zone or uniformly distributed roof snow load calculated from 40 psf ground snow zone as defined by ASCE7-10 Code.

30,000 LB., 50,000 LB.* ROOF LOAD: 36' - 78'



The strength of the 30,000 lb. and 50,000 lb. Sukup roof comes from **double C-shaped channels** forming I-beam rafters with C-shaped purlins. Rafters and purlins are manufactured from 70,000 PSI tensile strength galvanized steel.

100,000 LB.* ROOF LOAD: 72' - 135' & 150,000 LB.* ROOF LOAD: 156'-165'



Our 100,000 lb. and 150,000 lb. roofs are constructed of **I-beam** rafters and an extra-heavy peak ring all manufactured at Sukup using the latest technology. The rafters in the 156' bin are constructed with 65,000 PSI tensile strength I-beams.

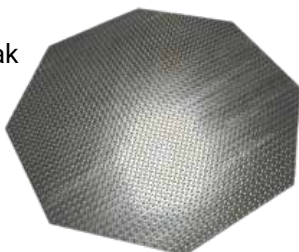
*Standard roof peak loads meet ASCE 7-10 for unbalanced snow load with 40 psf ground snow load.

50,000, 100,000, & 150,000 LB. PEAK DECK SIZES

- 10' across on 42'-48' bin
- 16' across on 72'-135' bin
- 12' across on 54'-60' bin
- 21' across on 156'-165' bin

SUKUP COMMERCIAL PEAK LIDS

Sukup commercial roofs come equipped with a 1/4" thick, 60" diameter, diamond deck steel peak lid that provides a solid base for conveying equipment or fill spouts. The diamond decking provides a non-slip surface for improved worker safety. The lid can be cut on-site to match your conveyor or down spout requirements.



RIGIDIZED ROOF PANELS

Sukup's specially-designed roof panels are formed on a fully-automated, highly-advanced, single-pass roll forming system. This system maintains tight tolerances, ensuring an accurate fit for easier assembly and a tight seal between panels. The roll-forming process includes a step to rigidize the full length of the roof panels every 4" to increase the stiffness of the panels, making them easier to handle. Sukup roof panels have 3" roof ribs and incorporate multiple bends, giving added strength to the roof panels. Sukup even went the extra step of making the ribs two different widths for a better overlap and fit. The



inner or lower rib is slightly smaller than the upper, allowing the sheets to nest properly.

ROOF RINGS

Roof rings are standard on all Sukup commercial roofs. The number of rings varies depending upon bin diameter.

LADDERS, CAGES, AND PLATFORMS

Sukup has available ladders, cages, landing platforms and stairs. Sukup ladders feature continuous handrails and rungs securely fastened, so they can't turn. Cages are also available for outside ladders for increased safety.



Fall Arrest Ladder packages available OSHA 19.10.23



Base to Peak Lid

PROPER VENTILATION - SUKUP ROOF VENTS

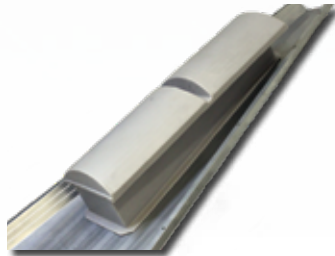
Proper ventilation is an important part of maintaining grain quality. Sukup offers 18" fixed screen and 24" power roof exhausters.

Exclusive 18" poly vents with hinged screen are extremely durable and feature a patented debris deflector to prevent damage to roof sheets from accumulating fines and debris.

Sukup roof sheets are available pre-punched for 18" vents. Pre-punching the vent holes produces an extra-tall (1 1/8") extruded lip that works as a barrier, preventing moisture from leaking into the bin through the vent opening.



Sukup Power Roof Exhausters feature a totally enclosed 1750 RPM motor, fan blade, shutters, and galvanized housing for long lasting protection from the elements. We also offer an optional screen kit. Tapered poly peak vents are also available.



SUKUP HEAVY-DUTY HOPPER BINS

- 15'-48' diameter; 3-24 rings, 45° hopper standard, 60° available on request
- May be mounted on overhead super structures for loading of semis or rail cars
- Can be used to store cool, dry grain for an extended period of time
- All base configurations start with 70,000 PSI tensile strength steel, wide flange (I-beam) legs
- L-shaped cross-bracing between the legs adds more stability
- Hopper ring flashing covers the ledge where the tank and cone join to prevent grain from accumulating on the ledge



COMMERCIAL FANS

Sukup Fans are number one in the industry! Sukup is top in performance and reliability. Centrifugal fans available up to 100 HP. Axial fans available up to 44" diameter.



COMMERCIAL BIN SIZES

Dia.	Max Peak Heights	Max. Capacities Available (Bu.)	Max Rings	Standard Roof Peak Load (Lbs.)	Optional Roof Peak Load (Lbs.)
42'	122' 6"	132,900	30	30,000 (5' Peak Lid)	15,000* (5' Peak Lid) or 50,000 (10' Peak Deck)
48'	124' 4"	174,400	30	30,000 (5' Peak Lid)	15,000* (5' Peak Lid) or 50,000 (10' Peak Deck)
54'	126' 2"	221,700	30	30,000 (5' Peak Lid)	15,000* (5' Peak Lid) or 50,000 (12' Peak Deck)
60'	128' 1"	275,000	30	30,000 (5' Peak Lid)	15,000* (5' Peak Lid) or 50,000 (12' Peak Deck)
72'	132' 1"	399,500	30	50,000 (16' Peak Deck)	30,000* (5' Peak Lid) or 100,000 (16' Peak Deck)
75'	133' 0"	434,500	24	50,000 (16' Peak Deck)	30,000* (5' Peak Lid) or 100,000 (16' Peak Deck)
			30	100,000 (16' Peak Deck)	
78'	133' 11"	471,000	20	50,000 (16' Peak Deck)	30,000* (5' Peak Lid) or 100,000 (16' Peak Deck)
			30	100,000 (16' Peak Deck)	30,000* (5' Peak Lid)
90'	137' 8"	632,800	30	100,000 (16' Peak Deck)	30,000* (5' Peak Lid)
105'	138' 9"	871,000	30	100,000 (16' Peak Deck)	
135'	147' 11"	1,471,600	30	100,000 (16' Peak Deck)	
156'	152' 7"	1,994,840	30	150,000 (21' Peak Deck)	
165'	155' 7"	2,245,950	30	150,000 (21' Peak Deck)	

All roofs rated for 105 mph wind zone as defined by ASCE 7-10 code

50K, 100K, & 150K roof peak loads meet ASCE 7-10 for unbalanced snow load with 40 psf ground snow load and temperature cables at maximum Sukup quantity.

* Only available up to 24 rings tall



SPECIFICATIONS

# of Rings	9	10	11	12	13	14	15	16	17	18
Eave Height (ft)	33' 1"	36' 9"	40' 5"	44' 1"	47' 9"	51' 5"	55' 1"	58' 9"	62' 5"	66' 1"
Eave Height (mtr)	10.08	11.20	12.32	13.44	14.55	15.67	16.79	17.91	19.02	20.14

Model #	Max. Cap. Bu.*	Peak Height				Metric Tons**		
		15 & 30 K		50 & 100 K				
		Feet	Meters	Feet	Meters	Wheat	Corn	Rice
3610	34,250	47' 3"	14.40	45' 7"	13.89	932	870	700
3612	40,541	54' 7"	16.64	52' 11"	16.13	1,103	1,030	829
3614	46,832	61' 11"	18.87	60' 3"	18.36	1,274	1,190	957
3616	53,123	69' 3"	21.11	67' 7"	20.6	1,445	1,350	1,086
3618	59,414	76' 7"	23.34	74' 11"	22.83	1,616	1,510	1,214
3620	65,705	83' 11"	25.58	82' 3"	25.07	1,787	1,669	1,343
3622	71,996	91' 3"	27.81	89' 7"	27.31	1,959	1,829	1,472
3624	78,287	98' 7"	30.05	96' 11"	29.54	2,130	1,989	1,600
3626	84,578	105' 11"	32.28	104' 3"	31.78	2,301	2,149	1,729
3628	90,869	113' 3"	34.52	111' 7"	34.01	2,472	2,309	1,857
3630	97,160	120' 7"	36.75	118' 11"	36.25	2,643	2,469	1,986
4210	47,252	49' 2"	14.99	47' 5"	14.45	1,285	1,200	965
4212	55,817	56' 6"	17.22	54' 9"	16.69	1,518	1,418	1,140
4214	64,383	63' 10"	19.46	62' 1"	18.92	1,751	1,635	1,315
4216	72,949	71' 2"	21.69	69' 5"	21.16	1,984	1,853	1,490
4218	81,515	78' 6"	23.93	76' 9"	23.39	2,217	2,070	1,665
4220	90,081	85' 10"	26.16	84' 1"	25.63	2,450	2,288	1,840
4222	98,647	93' 2"	28.40	91' 5"	27.86	2,683	2,505	2,016
4224	107,213	100' 6"	30.63	98' 9"	30.10	2,916	2,723	2,190
4226	115,737	107' 10"	32.87	106' 1"	32.33	3,149	2,941	2,366
4228	124,300	115' 2"	35.10	113' 5"	34.57	3,382	3,158	2,541
4230	132,863	122' 6"	37.34	120' 9"	36.80	3,614	3,376	2,716
4810	62,523	51'	15.54	49' 4"	15.04	1,700	1,588	1,277
4812	73,711	58' 4"	17.78	56' 8"	17.27	2,005	1,872	1,506
4814	84,899	65' 8"	20.02	64'	19.51	2,309	2,156	1,735
4816	96,088	73'	22.25	71' 4"	21.74	2,613	2,440	1,963
4818	107,276	80' 4"	24.49	78' 8"	23.98	2,917	2,725	2,192
4820	118,464	87' 8"	26.72	86'	26.21	3,222	3,009	2,420
4822	129,652	95'	28.96	93' 4"	28.45	3,526	3,293	2,649
4824	140,840	102' 4"	31.19	100' 8"	30.68	3,830	3,577	2,878
4826	151,974	109' 8"	33.43	108'	32.92	4,134	3,861	3,106
4828	163,158	117'	35.66	115' 4"	35.15	4,439	4,145	3,335
4830	174,342	124' 4"	37.90	122' 8"	37.39	4,743	4,430	3,563

Model #	Max. Cap. Bu.*	Peak Height				Metric Tons**		
		15 & 30 K		50 & 100 K				
		Feet	Meters	Feet	Meters	Wheat	Corn	Rice
5410	80,152	52' 10"	16.10	50' 6"	15.39	2,180	2,036	1,638
5412	94,312	60' 2"	18.34	57' 10"	17.63	2,565	2,395	1,927
5414	108,472	67' 6"	20.57	65' 2"	19.86	2,950	2,755	2,216
5416	122,632	74' 10"	22.81	72' 6"	22.1	3,335	3,115	2,506
5418	136,792	82' 2"	25.04	79' 10"	24.33	3,720	3,474	2,795
5420	150,952	89' 6"	27.28	87' 2"	26.57	4,105	3,834	3,084
5422	165,112	96' 10"	29.51	94' 6"	28.8	4,490	4,194	3,373
5424	179,272	104' 2"	31.75	101' 10"	31.04	4,875	4,553	3,663
5426	193,362	111' 6"	33.99	109' 2"	33.27	5,260	4,913	3,952
5428	207,517	118' 10"	36.22	116' 6"	35.51	5,645	5,272	4,241
5430	221,672	126' 2"	38.46	123' 10"	37.74	6,030	5,632	4,531
6010	100,214	54' 9"	16.69	52' 5"	15.98	2,725	2,545	2,048
6012	117,696	62' 1"	18.92	59' 9"	18.21	3,201	2,989	2,405
6014	135,177	69' 5"	21.16	67' 1"	20.45	3,676	3,433	2,762
6016	152,659	76' 9"	23.39	74' 5"	22.68	4,152	3,877	3,119
6018	170,140	84' 1"	25.63	81' 9"	24.92	4,627	4,321	3,476
6020	187,622	91' 5"	27.86	89' 1"	27.15	5,102	4,765	3,833
6022	205,103	98' 9"	30.10	96' 5"	29.39	5,578	5,209	4,191
6024	222,585	106' 1"	32.33	103' 9"	31.62	6,053	5,653	4,548
6026	239,979	113' 5"	34.57	111' 1"	33.86	6,529	6,097	4,905
6028	257,454	120' 9"	36.80	118' 5"	36.09	7,004	6,541	5,262
6030	274,929	128' 1"	39.04	125' 9"	38.33	7,479	6,985	5,619
7210	147,939	58' 9"	17.91	55' 1"	16.79	4,023	3,757	3,023
7212	173,113	66' 1"	20.14	62' 5"	19.02	4,708	4,397	3,537
7214	198,286	73' 5"	22.38	69' 9"	21.26	5,392	5,036	4,051
7216	223,456	80' 9"	24.61	77' 1"	23.5	6,077	5,675	4,566
7218	248,633	88' 1"	26.85	84' 5"	25.73	6,762	6,315	5,080
7220	273,806	95' 5"	29.08	91' 9"	27.97	7,446	6,954	5,594
7222	298,979	102' 9"	31.32	99' 1"	30.2	8,131	7,594	6,109
7224	324,153	110' 1"	33.55	106' 5"	32.44	8,815	8,233	6,623
7226	349,200	117' 5"	35.79	113' 9"	34.67	9,500	8,872	7,137
7228	374,364	124' 9"	38.02	121' 1"	36.91	10,184	9,512	7,652
7230	399,528	132' 1"	40.26	128' 5"	39.14	10,869	10,151	8,166



If you must enter the bin:

Follow all applicable safety regulations. Shut off and lock out all power. Station another person outside the bin. Use a safety harness and safety line.

Purchase ladder and safety cages and use a safety harness. Maintain secure hand and foot hold when climbing. Metal is slippery when wet. Never carry items while climbing on bin.

Failure to heed these warnings may result in serious injury or death.

19	20	21	22	23	24	25	26	27	28	29	30
69' 9"	73' 5"	77' 1"	80' 9"	84' 5"	88' 1"	91' 9"	95' 5"	99' 1"	102' 9"	106' 5"	110' 1"
21.26	22.38	23.50	24.61	25.73	26.85	27.97	29.08	30.2	31.32	32.44	33.55

Model #	Max. Cap. Bu.*	Peak Height				Metric Tons**		
		15 & 30 K		50 & 100 K				
		Feet	Meters	Feet	Meters	Wheat	Corn	Rice
7510	161,509	59' 8"	18.19	55' 11"	17.04	4,392	4,102	3,300
7512	188,824	67'	20.42	63' 3"	19.28	5,135	4,796	3,858
7514	216,139	74' 4"	22.66	70' 7"	21.51	5,878	5,490	4,416
7516	243,454	81' 8"	24.89	77' 11"	23.75	6,621	6,183	4,974
7518	270,769	89'	27.13	85' 3"	25.98	7,363	6,877	5,532
7520	298,084	96' 4"	29.36	92' 7"	28.22	8,106	7,571	6,090
7522	325,398	103' 8"	31.60	99' 11"	30.45	8,849	8,265	6,648
7524	352,713	111'	33.83	107' 3"	32.69	9,592	8,958	7,206
7526	379,890	118' 4"	36.07	114' 7"	34.93	10,335	9,652	7,764
7528	407,195	125' 8"	38.30	121' 11"	37.16	11,078	10,346	8,323
7530	434,500	133'	40.54	129' 3"	39.40	11,820	11,040	8,881
7810	175,754	60' 7"	18.47	56' 10"	17.32	4,780	4,464	3,591
7812	205,298	67' 11"	20.70	64' 2"	19.56	5,583	5,214	4,195
7814	234,841	75' 3"	22.94	71' 6"	21.79	6,386	5,965	4,798
7816	264,385	82' 7"	25.17	78' 10"	24.03	7,190	6,715	5,402
7818	293,929	89' 11"	27.41	86' 2"	26.26	7,993	7,465	6,005
7820	323,473	97' 3"	29.64	93' 6"	28.50	8,797	8,216	6,609
7822	353,016	104' 7"	31.88	100' 10"	30.73	9,600	8,966	7,213
7824	382,560	111' 11"	34.11	108' 2"	32.97	10,404	9,716	7,816
7826	411,954	119' 3"	36.35	115' 6"	35.20	11,207	10,467	8,420
7828	441,487	126' 7"	38.58	122' 10"	37.44	12,010	11,217	9,023
7830	471,020	133' 11"	40.82	130' 2"	39.67	12,814	11,967	9,627
9010	239,665	64' 4"	19.61	60' 10"	18.54	6,518	6,087	4,897
9012	278,999	71' 8"	21.84	68' 2"	20.78	7,587	7,086	5,700
9014	318,332	79'	24.08	75' 6"	23.01	8,657	8,085	6,504
9016	357,666	86' 4"	26.31	82' 10"	25.25	9,727	9,084	7,308
9018	396,999	93' 8"	28.55	90' 2"	27.48	10,796	10,083	8,111
9020	436,332	101'	30.78	97' 6"	29.72	11,866	11,082	8,915
9022	475,666	108' 4"	33.02	104' 10"	31.95	12,936	12,081	9,718
9024	514,999	115' 8"	35.26	112' 2"	34.19	14,005	13,080	10,522
9026	554,131	-	-	119' 6"	36.42	15,075	14,079	11,326
9028	593,450	-	-	126' 10"	38.66	16,145	15,078	12,129
9030	632,769	-	-	134' 2"	40.89	17,214	16,077	12,933

Model #	Max. Cap. Bu.*	Peak Height				Metric Tons**		
		15 & 30 K		50 & 100 K				
		Feet	Meters	Feet	Meters	Wheat	Corn	Rice
10510	335,864	69'	21.03	65' 5"	19.94	9,134	8,530	6,846
10512	389,401	76' 4"	23.27	72' 9"	22.17	10,590	9,890	7,937
10514	442,938	83' 8"	25.5	80' 1"	24.41	12,046	11,250	9,029
10516	496,476	91'	27.74	87' 5"	26.64	13,502	12,610	10,120
10518	550,013	98' 4"	29.97	94' 9"	28.88	14,957	13,969	11,211
10520	603,550	105' 8"	32.21	102' 1"	31.12	16,413	15,329	12,302
10522	657,087	113'	34.44	109' 5"	33.35	17,869	16,689	13,394
10524	710,624	120' 4"	36.68	116' 9"	35.59	19,325	18,049	14,485
10526	763,884	127' 8"	38.91	124' 1"	37.82	20,781	19,408	15,613
10528	817,401	135'	41.15	131' 5"	40.06	22,237	20,768	16,707
10530	870,919	142' 4"	43.38	138' 9"	42.29	23,693	22,128	17,800
13520	1,029,618	-	-	111' 3"	33.91	28,000	26,150	21,036
13522	1,118,118	-	-	118' 7"	36.14	30,407	28,398	22,845
13524	1,206,618	-	-	125' 11"	38.38	32,814	30,646	24,653
13526	1,294,649	-	-	133' 3"	40.61	35,220	32,894	26,461
13528	1,383,117	-	-	140' 7"	42.85	37,627	35,141	28,269
13530	1,471,585	-	-	147' 11"	45.09	40,034	37,389	30,077
15620	1,404,689	-	-	115' 11"	35.33	38,200	35,743	28,700
15622	1,522,863	-	-	123' 3"	37.57	41,414	38,750	31,114
15624	1,640,444	-	-	130' 7"	39.8	44,628	41,679	33,529
15626	1,758,576	-	-	137' 11"	42.04	47,841	44,681	35,943
15628	1,876,708	-	-	145' 3"	44.27	51,055	47,682	38,357
15630	1,994,840	-	-	152' 7"	46.51	54,269	50,684	40,772
16520	1,585,172	-	-	118' 11"	36.25	43,124	40,275	32,399
16522	1,717,328	-	-	126' 3"	38.48	46,719	43,633	35,100
16524	1,849,483	-	-	133' 7"	40.72	50,314	46,991	37,801
16526	1,981,639	-	-	140' 11"	42.92	53,910	50,348	40,502
16528	2,113,795	-	-	148' 3"	45.19	57,505	53,706	43,203
16530	2,245,950	-	-	155' 7"	47.42	61,100	57,604	45,904

Note: All models available in 10 - 30 rings.
Contact Sukup Manufacturing for specifications.

Sukup Manufacturing Co. provides this information to assist you in choosing the optimal equipment for your situation. Many factors, such as grain variety, maturity levels, cleanliness of the grain, various weather conditions, etc., can affect the performance of agricultural equipment and your results may vary. Thus, this information is not a guarantee of product specifications or performance. Based on these factors, Sukup specifications should only be used as estimates, and not as a warranty, expressed or implied, of how a particular Sukup unit will perform under your operating conditions. Because we are continuously improving Sukup products, changes may occur that may not be reflected in the specifications. Sukup Commercial Bins are designed for storage of free-flowing grain.

Note: Model # indicates bin diameter (in feet) and number of rings.
* Max capacities are based on bins with no plenum and grain peaked at 28° angle of repose with 6% compaction.
** Tonnage based on 6% compaction and the following grain densities: Wheat: 772 kg/m³ (48 lbs/ft³), Corn: 721 kg/m³ (45 lbs/ft³), Rice: 580 kg/m³ (36 lbs/ft³).

Note: Taller or shorter eave heights are available in some situations. Contact Sukup Manufacturing for more details.

Eugene and Mary Sukup started Sukup Manufacturing Co. in 1963. With the help of their two sons, Charles and Steve, this family-owned and operated business has grown into a leader in the grain storage, drying, and handling industry.



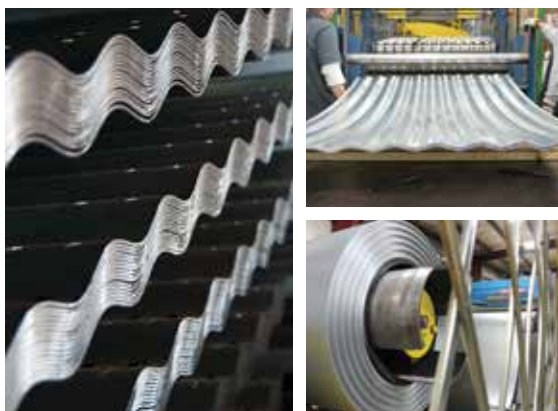
Three generations of Sukup family involved in the business.



Sukup Manufacturing Co, Sheffield, IA



Sukup invested in the newest, most advanced bin production line in the world. Using the most accurate roll-forming machinery available results in great fitting, quality bins, that are efficiently and economically produced. That is why they offer a 5-year limited warranty.



FACTORS TO CONSIDER FOR GRAIN BINS



SEISMIC
ZONE



WIND
SPEEDS



SNOW
ZONE



CONVEYOR
WEIGHTS



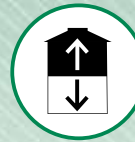
SOIL
TESTING



RAILWAY
PROXIMITY



SIMULTANEOUS
LOAD UNLOAD



FILL &
UNLOAD RATES



INTENDED
USE



SIDEDRAW
CAPABILITY



FILL & EMPTY
CYCLES PER YEAR



FUTURE
EXPANSION

Sukup Buildings

- Clear span up to 200' for multi-use commercial, agricultural and industrial buildings
- Multi-span construction available to reduce cost
- All secondary structural is factory punched for ease of installation
- All secondary structural is produced from Galvanized material with a factory applied clear acrylic coating
- Sukup wall and roof panels are made from Galvalume® + AZ-55 substrate for extreme corrosion resistance, so they will look like new for years to come
- Sukup offers 12 standard colors for roof, walls and trims
- Sukup is a family-owned and operated business, headquartered in America's heartland - Iowa, where the various products are produced and fabricated



(800) 970-7333 • sales@wscmsc.com • wscmsc.com

OREGON

4180 Silverton Rd. NE
Salem, OR 97305
Office (503) 581-7131

IDAHO

2362 Warren Avenue
Twin Falls, ID 83301
Office (208) 733-2215

MONTANA

Great Falls, MT 59404
Toll Free (877) 733-2214

WASHINGTON

Spokane, WA
Office (509) 581-7131